

# iSeeVideo™



## Easy RMR from Video:

## Enhanced customer service and peace of mind

NAPCO iSeeVideo lets alarm dealers/integrators offer affordable, remote video internet monitoring to residential and small business accounts. A unique, easily installed, camera system and monthly service provides the opportunity to reap recurring revenue from CCTV video installations, in new and retrofit applications.

Advanced ISee Video systems put the premises of your accounts online, viewable anytime, anywhere there is a PC or web-enabled cellphone or PDA of any kind (Windows, Apple, Linux, etc; iPhone, Razr, Blackberry, etc.).

There's no software to load and it's compatible with any browser (Internet Explorer, Mozilla, Safari). It includes proprietary firewall buster technology so your customers can always view their video, despite the tightest corporate workplace firewalls. Plus, iSee Video supports all brands of analog video cameras, allowing you to choose the right camera for the application, inside or out.

iSee Video even works with virtually any alarm system. Events trigger the archiving of video, which is time-/date-stamped and stored for later reference and can be emailed to the subscribers' PC or phone and also to a central station for use in video verification (if desired).

Installation couldn't be simpler, a purely plug-and-play 3-step installation, and requires zero IT/computer proficiency. No PC is required on the premises, just a

modem, DSL or cable. Napco's patented G-Box interface eliminates computer port issues and there is no data forwarding needed, as the G-Box autosenses where to send the data and how.

Your accounts enjoy an easy-to-use, intuitive web-based user interface, with live video viewable as a quad screen (4-cameras) or one camera at a time. Customers can look-in on their home or business on-demand or by selected recorded events. They can automatically be sent video clips on events - alarms, opens/closes, child gets home, pool gate or delivery door is accessed, etc. Consumers can export a snap-shot of the video to save to their hard drive or download archived clips to preserve a permanent protected record of time-/date-stamped video. Customer's video is password-protected using the password they set, change and administer. The user interface screen also features a customizable dealer masthead with your logo and contact info, so you can brand the service as your own.



# iSeeVideo™



Everything you need in one kit – VIP-GatewayX/24 – includes hardware and 24 month online account access.

Just add cameras and start earning recurring monthly revenue

## Plug and play easy online video installation

iSeeVideo G-Box Plug-and-Play Gateway Interface, included in the VIP-GATEWAYX/24 kit, is an amazingly intelligent internet video component that allows the plug & play installation of the VIP-Gateway camera internet interface. Other devices that allow direct connection to the internet require complex re-configuration of the router, which involves the use of the customer's computer, however, the unique G-Box eliminates the potential corporate liability and privacy issues associated with this installer's use of the consumer's personal computer as an installation tool. The G-Box segments the network, automatically detects and properly forwards the video data intended for the VIP-Gateway or to the customer's computer/router,



as required. The G-Box is designed to be placed between the broadband modem and router, and also functions as a router for cases where the customer's PC is the only device connected to the broadband modem. The G-Box (Patents Pending) provides 4 auto-sensing LAN ports for connection to the VIP-Gateway and to the customer's PC, router or other equipment. This revolutionary new system totally eliminates the need for TCP/IP and network trained professionals for typical VIP-Gateway installations, allowing standard alarm personnel to quickly and easily install these IP devices. The G-Box functions as both a DHCP client and server, to fit seamlessly into all typical DHCP environments.

# iSeeVideo: See how your customers can use video you provide monthly ...



Monitor babysitters and nannies, and with security system integration offer more advanced capabilities than video alone.



Keep an eye on second homes or summer homes with no computer necessary on premises.



Watch over caregivers and elderly relatives and let them stay independent longer and safer.



Protect accounts' valuable equipment in construction and agriculture



Keep tabs on employee safety and sanitary procedures in restaurants, like being in two places at once.



Video is time- and date-stamped, essential for use as evidence.



Security cameras in walkways and parking lot provide added security for customers and employees.



Allow your accounts to watch over their cash register and the quality of their customer service.



Visually verify and record who enters sensitive areas and what they do there (e.g. HIPAA compliance).

... all viewable from any PC or web enabled cellphone!

# iSeeVideo: Advanced features and technology, versatile and scalable

## iSee Video server features:

iSee Video's server ([www.videoalert.net](http://www.videoalert.net)) is the Napco-supplied server that stores your iSee Video accounts and allows subscribers to view cameras connected to their VIP-Gateway from any personal computer or web enabled cell phone or PDA. It is compatible with computers running the Microsoft Windows®, Apple® and Linux® operating systems and is also compatible with any WAP-enabled cell phone or mobile video device. The server also automatically notifies the subscriber by email upon receipt of triggered video events and archives them for viewing at a later time from any personal computer. Each standard subscriber account provides 50MB of storage, allowing the archiving of approximately (150) 20 second video clips (10 second pre-alarm and 10 second post-alarm, adjustable). The server is designed to allow the customer to have complete control of their account in regard to passwords, email addresses and other personal information, freeing up the installation company from these routine maintenance procedures. With a simple one-time logo/artwork upload, the consumers' login and video inbox screens may be privately labeled for the security company providing their service, including contact phone nos., etc. to help generate referral business.

## Scalable account video storage or onsite server solution

2 years of consumer video account access on the Napco server is included with standard iSee Video hardware kits (VIP Gateway X/24). This includes, 50MB of video storage, allowing the archiving of approximately (150) 20 second video clips (10 second pre-alarm and 10 second post-alarm, adjustable). However, video storage is totally scalable for larger video archiving requirements. In fact, larger dealers and/or central stations may opt to have their own video server, of unlimited capacity, which Napco will specify and its iSee Video Applications Group can even set up and provide routine upgrades/maintenance, as needed.

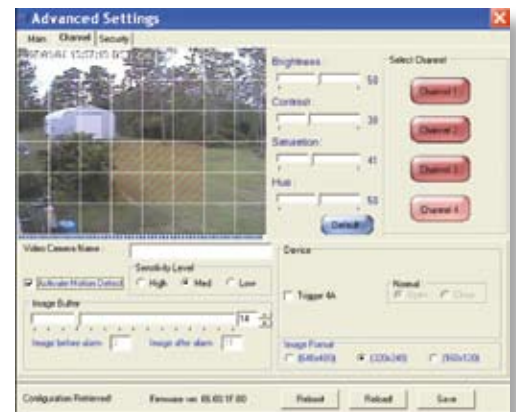


## New advanced pixel-based motion detection!

Pixel-based motion detection with adjustable sensitivity can be enabled, so that motion is detected when the system analyzes video of a specific area of interest and pixel changes are detected. During installation, using iSee Video's setup matrix, the camera's field-of-view is visually divided up into 48 squares, overlaid on-screen within a 48-zone matrix.

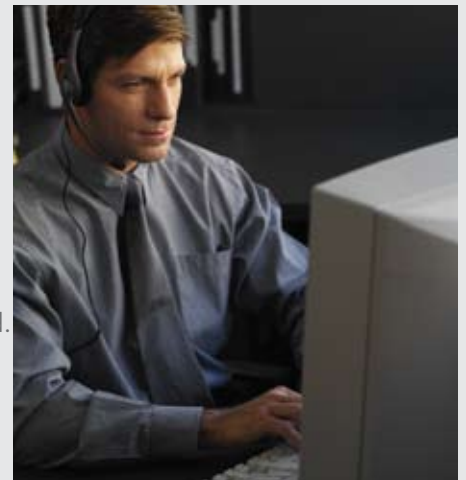
The installer simply clicks on each square to be deactivated or excluded from video-motion detection, in effect masking them out. The installer can choose, for example, to include a path

or stoop to the account's front door, in the video alarm reporting coverage, but exclude potential false/nuisance activity of blowing shrubbery, frontage street activity, etc., with a selectable sensitivity of low, medium or high. Motion detection can also be selectively activated using schedules; during armed-only alarm status; during disarmed-only status, etc.



## Central station automation system integration

iSee Video™ system also does double-duty, for central stations, in addition to enabling dealers' accounts to look-in on their premises, the iSee Video system is integrated with a growing number of CS automation systems, to capture and deliver live-video on alarm triggered events to the CS operators' screens. In this way, iSee Video is also a remote video verification monitoring solution: Alarms in progress can be viewed so false alarms and unwarranted dispatches can be virtually eliminated.



# Plug and Play: Easy three step installation with no I.T. skills required

## iSee Video Gateway

iSee Video VIP-Gateway is a module that converts any 4 analog CCTV cameras into internet ready IP cameras. It provides video images with a maximum of 640 x 480 resolution, viewable on virtually any computer at up to 5 FPS. The Gateway provides 4 input triggers that when activated, will prompt the transmission of video clips to the server. It also has a local video output that provides a sequenced video output of the 4 cameras. There are additional 4 inputs that allow the user to lock in one of the cameras to the local output. The Gateway provides (at no additional service charge) dynamic IP support through the Napco iSeeVideo DNS server - every 16 seconds the Gateway checks in with its DNS server to ensure that the DHCP IP address is always maintained.

### SPECIFICATIONS:

#### VIP-GATEWAY Camera Connection Interface Specifications-

- 4 video inputs, accepts any analog CCTV camera.
- 1 trigger input per camera channel for triggering transmission of video to VideoAlert.net server for archiving.
- Provides 4 ports for trigger in contact (1 x camera), supporting a wide range of trigger devices simultaneously. Programmable normally open (NO) or normally closed (NC)
- Provides 4 contacts for video lock (1 x camera) on the analog video output
- Easily connects via UTP CAT5 cable (ethernet)
- Pixel based video motion detection with adjustable sensitivity and programmable 48 zone matrix masking capability per camera. scan time x 4 channels: 1 second. Three sensitivity levels.
- 10 seconds (adjustable to up to 3 minutes) of pre-alarm images per camera.
- Adjustable 24 bit color image resolution image size: 640x480, 320x240 and 160x120 set up through active-X server application.
- Email send function upon external trigger or video motion detection
- Dynamic IP support (without the need of 3rd party service) via iSeeVideo DDNS technology at no extra cost.
- NAPCO iSeeVideo proprietary firewall buster technology allows user to connect and view video behind even the tightest corporate firewall.
- Works with dynamic IP and IP-sharing allowing multiple Gateways to be connected to a router (no extra charge)
- Local video output latching - Video from cameras 1-4 may be latched to the video output by shorting input triggers 1b - 4b respectively.
- Transmission protocol: UDP. UDP Port used: Port 80 or any above 1000.
- Compatible with virtually all ISP connection types, including cable modem, DSL, PPPoE DSL, DSL/Router combos and satellite.
- Video out and video in 1 channel NTSC or PAL video output, can connect with PC and televisions, 4 channel.
- Video input programmable for NTSC or PAL.
- 1 Channel local video output, NTSC or PAL with switching: Selectable dwell time via web interface for local viewing or distribution.
- Unique RJ12 cable for power, simply connected via the input/output cable to the desired device (no jumpers)
- 1 input contact (armed - normally open ; disarmed - normally closed)
- 1 output contact (5 VDC)
- Programmable daily schedule (auto arm/disarm)

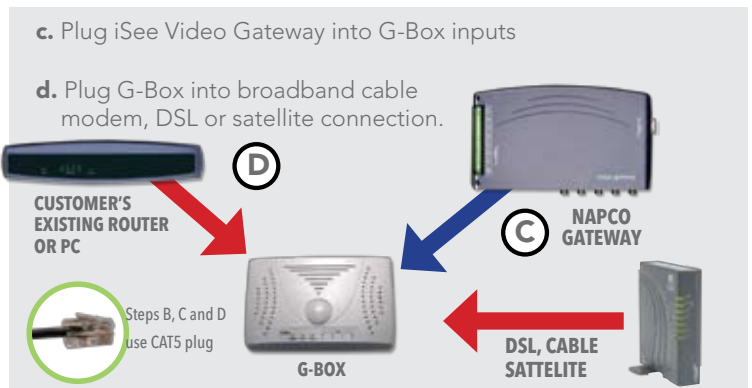
#### VIP-GATEWAY Physical Specifications

Dimensions: 4 7/8 x 8 1/4 x 1 1/2 (H x W x D), Inches  
Input Voltage: 5VDC via 120VAVto 5VDC transformer (supplied)  
Current: 600mA (transformer rating)

#### G-BOX Physical Specifications

Dimensions: 5 5/8x 3 3/8 x 1 1/8 (H x W x D), Inches  
Input Voltage: 9VAC via 120VAC to 9VAC transformer (supplied)  
Current: 180mA max (all 4 LAN ports in use)

## Installs in three easy steps!



### On-line account setup

- e. Enter MAC address of Gateway from the bottom of the unit.

### f. View video!



### Server Specifications

- Napco-provided server [www.videoalert.net](http://www.videoalert.net); self-server location can be any registered URL\*\*
- Compatible with ALL internet browsers (Internet Explorer, Mozilla, Safari, etc.)
- Compatible with ALL web-enabled cellphones and PDAs, including iPhone, Razer, LG, Blackberry, etc. (Does NOT require Microsoft CE or Pocket PC platform.)
- Pure secured (SSL) web interface: No subscriber software installation required.
- PIN-protected subscriber access for accounts: Featuring live video access on any web-enabled device, video clip storage and playback, email video alerts, connection monitor and user management
- Dynamic IP support support (without the need of 3rd party service) via iSeeVideo DDNS technology at no extra cost through the NAPCO iSeeVideo DNS server . DHCP IP address is always maintained, supervised every 16 seconds by Gateway check-in to DNS server.
- Compatible with virtually all ISP connection types, including cable modem, DSL, PPPoE DSL, DSL/Router combos and satellite.
- Archived video includes real-time embedded time/date and custom camera names (programmable)
- Downloadable video can be permanently saved using the latest universal FLV format
- 50 Mb Storage for Video Clips (server managed FIFO). Upgrades available.

Own Server can be wholly owned and operated by larger installation companies and central stations. (Requires iSee Video Applications group set up (one-time charge) and maintenance/upgrade plan.\*\*

### Ordering Information

**VIP-GatewayX/24:** Turn key Kit includes (1) VIP-GatewayX, (1) G-Box, 24 month VideoAlert server service

**VIP GatewayX:** Includes VIP-Gateway internet CCTV adapter module, power adapter and 3' CAT5 cable

# iSeeVideo: Commercial and residential applications and alarm integration

## Commercial applications

- Watch suspicious elements on premises and gather evidence against shoplifting and burglary.
- Monitor customer traffic remotely
- Employees and customers feel safer at night, walking through parking lots or working alone.
- Monitor critical dials, read-outs and gauges remotely.
- Presence of cameras discourage employee theft.
- Monitor live or recorded video of openings and closings.
- Keep track of loading dock deliveries and monitor stockrooms.
- Video evidence is kept off-premises and safe from employee tampering.
- Have video of workers' injuries to be used as evidence.
- Check up on cleaning services.
- Save time and travel expense retrieving and reviewing VHS surveillance tapes.

## Alarm system integration in commercial applications

- Verify alarms with video of the event.
- Confirm proper use of lock box, drop box or safe.
- Store recorded video and/or receive email notifications when someone opens a sensitive door or cabinet, securing items like drugs or client and patient records.
- Video guard tours, live or scheduled. If the room is dark lights can be turned on.

## Residential applications

- Monitor for intruders and help solve burglaries.
- Monitor nannies, babysitters and caregivers.
- Receive notifications when children get home and view video to see who might be with them.
- Monitor pets behavior.
- Monitor house or pool cleaning services.
- Monitor second homes or vacation homes.
- Let friends and relatives look in on special occasions remotely

## Alarm system integration in residential applications

- Enables relatives to remain in their homes by monitoring medication, reduce household accidents due to forgetfulness, all with video verification.
- Added peace-of-mind with nannies and babysitters by receiving alerts for feedings, changings and naps, with video verification.
- Safe, gun or liquor cabinet monitoring.
- Integrates with most professional security systems
- Verify alarms with video of the event.



**Your customers can upgrade their computers and cellphones without worry:** With some internet video systems, the purchase of a new computer or cellphone can mean your service becomes incompatible. But iSee Video requires no special software, which means if they have a web browser and internet connection, they can view live video. Vista, XP, Mac OS, Unix and Linux all work with iSee Video, as well as any internet capable cellphone, including iPhones, Razrs, LG and others.

**Try our demo now at [www.videoalert.net](http://www.videoalert.net)**

user name: iSee password: iSee

**We'll be glad to answer any of your questions.**

**Please call 1-800-645-9445**

[www.napcosecurity.com](http://www.napcosecurity.com)

